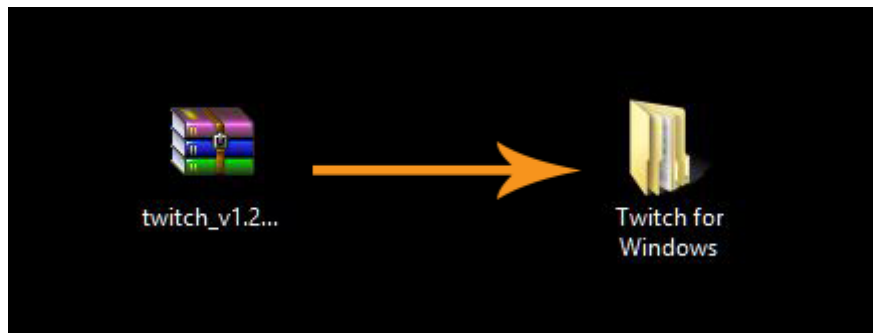


Twitch Installation - Windows

Step One:

- Login to your Video Copilot account <https://www.videocopilot.net/account/>
- Once logged-in to your account, click on the “Downloads” tab.
- Find the Twitch product and click on the download button.
- Download the PC version of the plug-in.
- Once the download is complete, extract the Twitch folder to an area such as your Desktop.

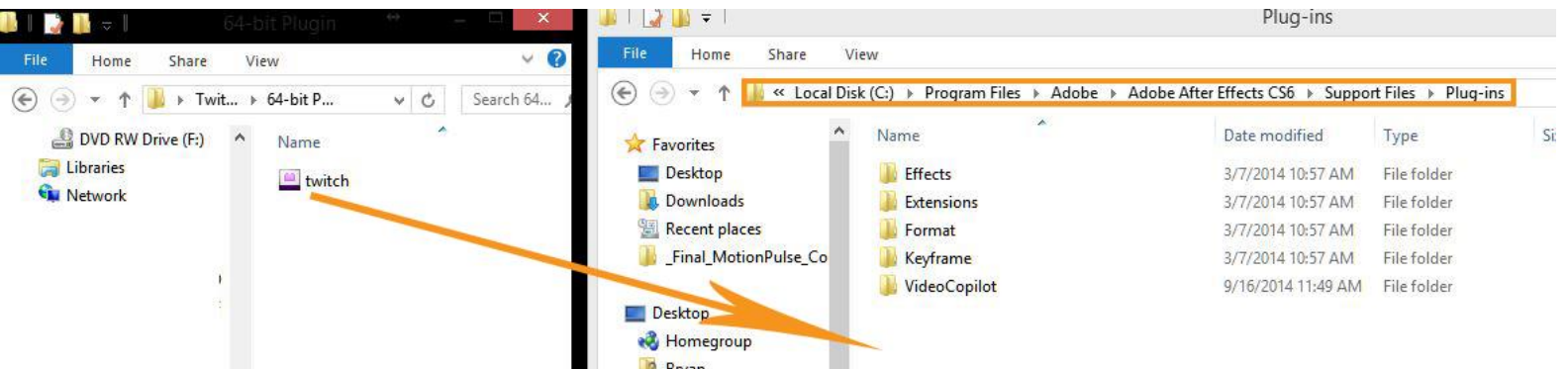


Step Two:

- Open the “Twitch for Windows” folder and choose the correct version for your machine (64bit or 32bit). If you’re using After Effects CS5 or later, use the 64bit version. If using AE7 through CS4, you’ll need the 32bit version.
- Open the 32bit or 64bit folder (depending on what you need) you’ll see the ***twitch.aex*** plug-in file.
- Drag the ***twitch.aex*** plug-in file into your After Effects Plug-ins folder. Here is an example path:

C:\Program Files\Adobe\Adobe After Effects CS6\Support Files\Plug-ins

******Install into the version of After Effects that you have if not CS6 as shown in example******



Step Three:

- Return to your Video Copilot download account where you downloaded the Twitch plug-in.
- Download the Twitch key file.

The screenshot shows the Video Copilot website's Downloads section. The top navigation bar includes links for PRODUCTS, BLOG, TUTORIALS, and CONNECT. Below this is a secondary navigation bar with links for Downloads, Order History, Settings, Support, Communicator, Admin, and Sign Out. The main content area is split into two columns: 'Twitch' and 'Files'.

Twitch

Important Licensing Info, Key File:
Be sure to download and install your Twitch Key file into the plug-in directory.
[Step-by-Step Guide](#)

Important AE CS5+ & 64-bit information:
Each download contains 2 versions of this plug-in, one for After Effects CS5+ (64-bit) and one for previous versions of After Effects such as AE 7, CS3 & CS4.
Please install the plug-in based on your version After Effects only. The 64-bit version is for After Effects CS5+ only.

Download Instructions: Click on the links to the right and download to your computer. Be sure that the resulting download is the same size as shown before unzipping.

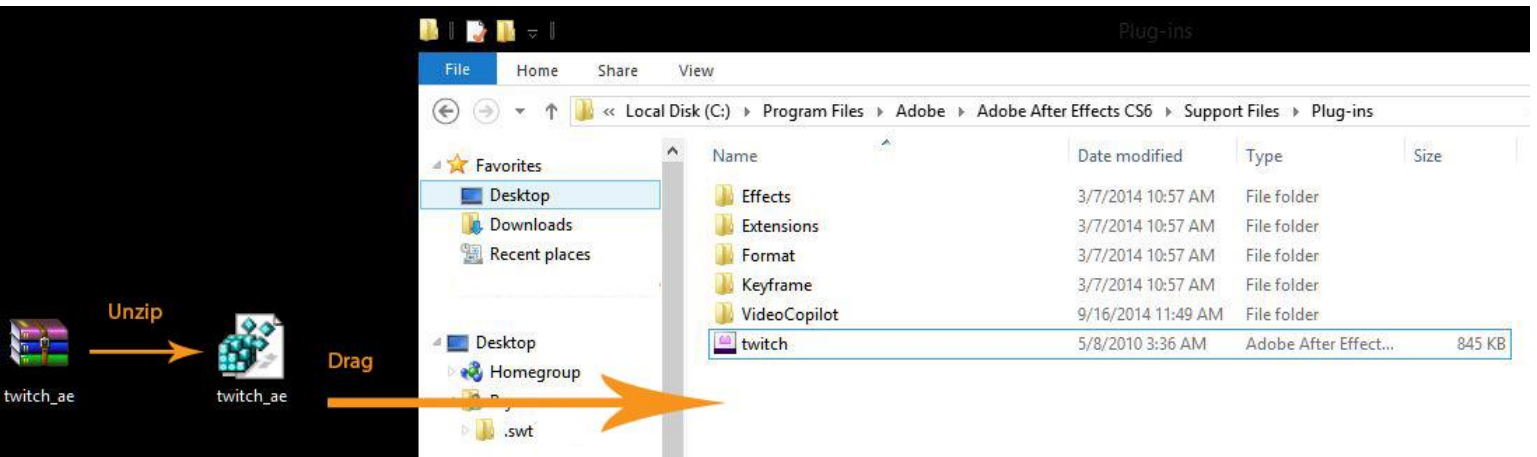
Product Installation: Please read the instructions that are included with the Twitch Plugin.

Files

- Twitch Plugin for Windows (ver. 1.2)**
744.82 KB
[DOWNLOAD](#)
- Twitch Plugin for Mac (ver. 1.2)**
1.07 MB
[DOWNLOAD](#)
- Twitch for CS6/CC Mac Update**
435.92 KB
[DOWNLOAD](#)
- Download Your Twitch Key**
Your unique license key, please don't share.
4 KB
[DOWNLOAD](#) (highlighted with a red box and arrow)
- Twitch Content**
Tutorials, Presets, Real 8mm, etc...
360.74 MB
[DOWNLOAD](#)
- Download Printable Cover Art**
304.85 KB
[DOWNLOAD](#)

Step Four:

- After the Twitch key file has finished downloading, unzip it to a location such as your Desktop.
- Drag the **twitch_ae.key** file into your Adobe After effects Plug-ins folder alongside the **twitch.aex** plug-in file that you installed back in *Step Two*.
- ****Do not try to open the twitch_ae.key file****

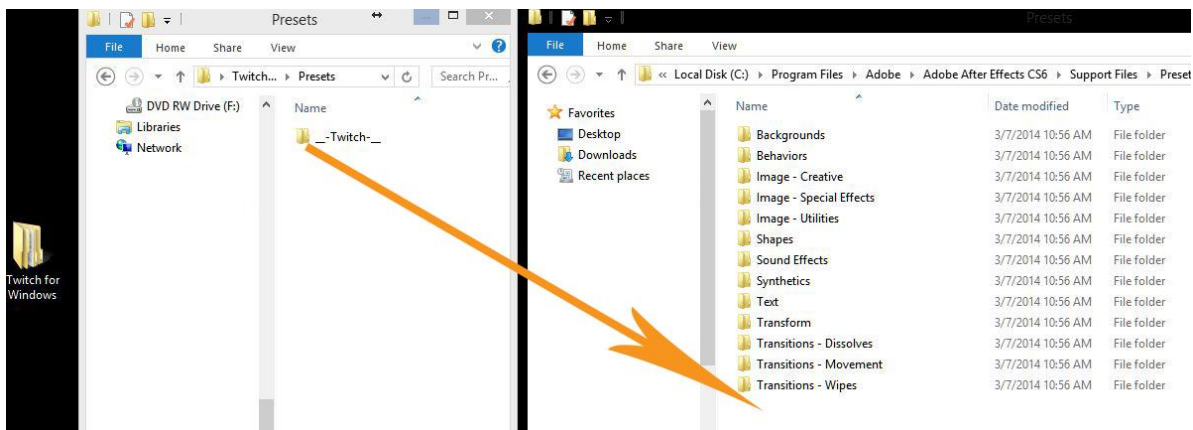


Step five:

- Go back into your to your “*Twitch for Windows*” folder and open up the “Presets” folder.
- Drag the **__-Twitch-__** folder directly into your After Effects Presets folder.
- Here is an example path:

C:\Program Files\Adobe\Adobe After Effects CS6\Support Files\Presets

******Install into the version of After Effects that you have if not CS6 as shown in example******



You have successfully installed Twitch!